

2,4-Dimethoxybenzaldehyde azine

M. A. A. A. Islam,^a M. T. H. Tarafder,^{b*} M. A. Alam,^a
N. Guidolin^c and E. Zangrando^c

^aDepartment of Chemistry, Rajshahi University of Engineering and Technology, Rajshahi 6204, Bangladesh, ^bDepartment of Chemistry, Rajshahi University, Rajshahi 6205, Bangladesh, and ^cDipartimento di Scienze Chimiche, Via Licio Giorgieri 1, 34127 Trieste, Italy

Correspondence e-mail: ttofazzal@yahoo.com

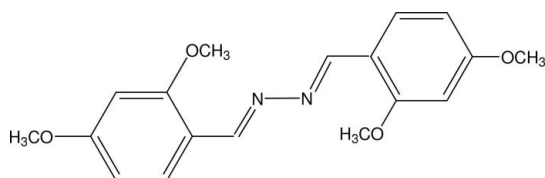
Received 9 September 2009; accepted 21 September 2009

Key indicators: single-crystal X-ray study; $T = 293$ K; mean $\sigma(\text{C}-\text{C}) = 0.003$ Å; R factor = 0.045; wR factor = 0.121; data-to-parameter ratio = 11.8.

The title molecule, $\text{C}_{18}\text{H}_{20}\text{N}_2\text{O}_4$, is located on a crystallographic centre of symmetry. The methoxy groups are coplanar with the benzene ring [interplanar angles of 14.4 (2) and 3.1 (3)°], indicating a conjugation effect.

Related literature

For the structures of related compounds, see: Narayana *et al.* (2007); Liu *et al.* (2007); Takakashi *et al.* (2006). For a statistical study of methoxy groups bound to phenyl rings, see: Hummel *et al.* (1988).



Experimental

Crystal data

$\text{C}_{18}\text{H}_{20}\text{N}_2\text{O}_4$
 $M_r = 328.36$

Monoclinic, $P2_1/c$
 $a = 6.775$ (2) Å

$b = 9.014$ (3) Å
 $c = 14.081$ (3) Å
 $\beta = 100.42$ (2)°
 $V = 845.7$ (4) Å³
 $Z = 2$

Mo $K\alpha$ radiation
 $\mu = 0.09$ mm⁻¹
 $T = 293$ K
 $0.45 \times 0.30 \times 0.12$ mm

Data collection

Enraf-Nonius DIP1030 image-plate diffractometer
Absorption correction: none
3535 measured reflections

1293 independent reflections
719 reflections with $I > 2\sigma(I)$
 $R_{\text{int}} = 0.058$
 $\theta_{\text{max}} = 24.1^\circ$

Refinement

$R[F^2 > 2\sigma(F^2)] = 0.045$
 $wR(F^2) = 0.121$
 $S = 0.84$
1293 reflections

110 parameters
H-atom parameters constrained
 $\Delta\rho_{\text{max}} = 0.12$ e Å⁻³
 $\Delta\rho_{\text{min}} = -0.10$ e Å⁻³

Data collection: *XPRESS* (MacScience, 2002); cell refinement: *DENZO* (Otwinowski & Minor, 1997); data reduction: *DENZO* and *SCALEPACK* (Otwinowski & Minor, 1997); program(s) used to solve structure: *SHELXS97* (Sheldrick, 2008); program(s) used to refine structure: *SHELXL97* (Sheldrick, 2008); molecular graphics: *ORTEP-3 for Windows* (Farrugia, 1997); software used to prepare material for publication: *WinGX* (Farrugia, 1999).

MAAAAI is grateful to the Department of Chemistry, Rajshahi University of Engineering and Technology, for a research grant. MTHT thanks the Department of Chemistry, Rajshahi University, for the provision of laboratory facilities.

Supplementary data and figures for this paper are available from the IUCr electronic archives (Reference: RZ2359).

References

- Farrugia, L. J. (1997). *J. Appl. Cryst.* **30**, 565.
Farrugia, L. J. (1999). *J. Appl. Cryst.* **32**, 837–838.
Hummel, W., Huml, K. & Burgi, H.-B. (1988). *Helv. Chim. Acta*, **71**, 1291–1302.
Liu, G., Xie, L., Wang, Y. & Wang, J.-D. (2007). *Acta Cryst.* **E63**, o2611.
MacScience (2002). *XPRESS*. MacScience Co. Ltd, Yokohama, Japan.
Narayana, B., Yathirajan, H. S., Sarojini, B. K. & Bolte, M. (2007). Private communication (deposition number 653075). CCDC, Union Road, Cambridge, England.
Otwinowski, Z. & Minor, W. (1997). *Methods in Enzymology*, Vol. 276, *Macromolecular Crystallography*, Part A, edited by C. W. Carter Jr & R. M. Sweet, pp. 307–326. New York: Academic Press.
Sheldrick, G. M. (2008). *Acta Cryst.* **A64**, 112–122.
Takakashi, H., Kubo, K., Takechi, H., Matsumoto, T. & Ideta, K. (2006). *J. Oleo Sci.* **55**, 483–486.

supplementary materials

Acta Cryst. (2009). E65, o2560 [doi:10.1107/S1600536809038082]

2,4-Dimethoxybenzaldehyde azine

M. A. A. A. Islam, M. T. H. Tarafder, M. A. Alam, N. Guidolin and E. Zangrando

Comment

The molecule of the title compound (Fig. 1) possesses a crystallographically imposed inversion centre at the midpoint of the N—N bond. Thus the conformation about the N1—N1ⁱ azine bridge (symmetry code: (i) $-x - 1, -y + 1, -z + 1$) is *trans*, with a torsion angle C1—N1—N1ⁱ—C1ⁱ of 180°. The molecule has coplanar non hydrogen atoms as found in other similar structures (Narayana *et al.*, 2007; Takakashi *et al.*, 2006). The coplanarity of methoxy groups with the benzene ring suggests the presence of a conjugation effect (Hummel *et al.*, 1988). The bond distance N1—N1ⁱ of 1.414 (4) Å, is comparable to those measured in the structure of methoxybenzaldehyde azine and *N,N*-bis(4-hydroxybenzylidene)-hydrazine, which are 1.418 and 1.415 Å, respectively (Narayana *et al.*, 2007; Liu *et al.*, 2007). The crystal packing does not show any π - π stacking interactions between aromatic rings.

Experimental

Hydrazine hydrate (99.99%) (0.13 g, 2.5 mmol) was added to a solution of 2,4-dimethoxybenzaldehyde (0.83 g, 5 mmol) in methanol (10 ml) with constant stirring for 5 min, at room temperature. A light yellow precipitate was formed, which was separated by filtration, washed with methanol and dried at 70°C for 1 h and then preserved *in vacuo* over anhydrous CaCl₂ (0.43 g, 44.79%, m.p. 473 K). The compound was soluble in chloroform, benzene and toluene whereas insoluble in acetonitrile, methanol and ethanol. The compound (0.37 g) was dissolved in chloroform (60 ml) at boiling temperature and allowed to stand at room temperature (20–25°C). Bright large yellow crystals, suitable for X-ray single-crystal analysis, were obtained after 7 days. The crystals were collected, washed with absolute ethanol and dried *in vacuo* over anhydrous CaCl₂.

Refinement

All H atoms were located geometrically and treated as riding atoms, with C—H = 0.93–0.96 Å, and with $U_{\text{iso}}(\text{H}) = 1.2U_{\text{eq}}(\text{C})$ or $1.5U_{\text{eq}}(\text{C})$ for methyl H atoms.

Figures

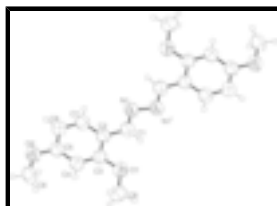


Fig. 1. ORTEP drawing (ellipsoids at the 40% probability level) of the title compound with atom labelling scheme. Primed atom at $-x - 1, -y + 1, -z + 1$.

2,4-Dimethoxybenzaldehyde azine

Crystal data

$C_{18}H_{20}N_2O_4$	$F_{000} = 348$
$M_r = 328.36$	$D_x = 1.289 \text{ Mg m}^{-3}$
Monoclinic, $P2_1/c$	Melting point: 475 K
Hall symbol: -P 2ybc	Mo $K\alpha$ radiation, $\lambda = 0.71073 \text{ \AA}$
$a = 6.775 (2) \text{ \AA}$	Cell parameters from 482 reflections
$b = 9.014 (3) \text{ \AA}$	$\theta = 3.6\text{--}20.7^\circ$
$c = 14.081 (3) \text{ \AA}$	$\mu = 0.09 \text{ mm}^{-1}$
$\beta = 100.42 (2)^\circ$	$T = 293 \text{ K}$
$V = 845.7 (4) \text{ \AA}^3$	Plate, yellow
$Z = 2$	$0.45 \times 0.30 \times 0.12 \text{ mm}$

Data collection

Enraf–Nonius DIP1030 image-plate diffractometer	719 reflections with $I > 2\sigma(I)$
Radiation source: fine-focus sealed tube	$R_{\text{int}} = 0.058$
Monochromator: graphite	$\theta_{\text{max}} = 24.1^\circ$
$T = 293 \text{ K}$	$\theta_{\text{min}} = 2.9^\circ$
φ -scans with narrow frames	$h = -7 \rightarrow 7$
Absorption correction: none	$k = -10 \rightarrow 10$
3535 measured reflections	$l = -16 \rightarrow 16$
1293 independent reflections	

Refinement

Refinement on F^2	Hydrogen site location: inferred from neighbouring sites
Least-squares matrix: full	H-atom parameters constrained
$R[F^2 > 2\sigma(F^2)] = 0.045$	$w = 1/[\sigma^2(F_o^2) + (0.0678P)^2]$
$wR(F^2) = 0.121$	where $P = (F_o^2 + 2F_c^2)/3$
$S = 0.84$	$(\Delta/\sigma)_{\text{max}} < 0.001$
1293 reflections	$\Delta\rho_{\text{max}} = 0.12 \text{ e \AA}^{-3}$
110 parameters	$\Delta\rho_{\text{min}} = -0.10 \text{ e \AA}^{-3}$
Primary atom site location: structure-invariant direct methods	Extinction correction: SHELXL97 (Sheldrick, 2008), $F_c^* = kF_c[1 + 0.001x F_c^2 \lambda^3 / \sin(2\theta)]^{-1/4}$
Secondary atom site location: difference Fourier map	Extinction coefficient: 0.070 (13)

Special details

Geometry. All s.u.'s (except the s.u. in the dihedral angle between two l.s. planes) are estimated using the full covariance matrix. The cell s.u.'s are taken into account individually in the estimation of s.u.'s in distances, angles and torsion angles; correlations between s.u.'s in cell parameters are only used when they are defined by crystal symmetry. An approximate (isotropic) treatment of cell s.u.'s is used for estimating s.u.'s involving l.s. planes.

Refinement. Refinement of F^2 against ALL reflections. The weighted R -factor wR and goodness of fit S are based on F^2 , conventional R -factors R are based on F , with F set to zero for negative F^2 . The threshold expression of $F^2 > 2\sigma(F^2)$ is used only for calculating R -factors(gt) *etc.* and is not relevant to the choice of reflections for refinement. R -factors based on F^2 are statistically about twice as large as those based on F , and R -factors based on ALL data will be even larger.

Fractional atomic coordinates and isotropic or equivalent isotropic displacement parameters (\AA^2)

	x	y	z	$U_{\text{iso}}^*/U_{\text{eq}}$
N1	-0.4202 (3)	0.4904 (2)	0.53948 (13)	0.0857 (6)
O1	0.0297 (2)	0.77203 (18)	0.52320 (12)	0.0960 (6)
O2	0.4398 (2)	0.55904 (18)	0.80720 (11)	0.0952 (6)
C1	-0.2709 (4)	0.5738 (3)	0.53259 (16)	0.0833 (7)
H1	-0.2800	0.6376	0.4800	0.100*
C2	-0.0880 (3)	0.5722 (2)	0.60384 (15)	0.0745 (6)
C3	0.0667 (3)	0.6732 (2)	0.59790 (16)	0.0768 (6)
C4	0.2433 (3)	0.6732 (2)	0.66487 (16)	0.0785 (7)
H4	0.3431	0.7425	0.6606	0.094*
C5	0.2699 (3)	0.5695 (3)	0.73791 (16)	0.0787 (6)
C6	0.1196 (4)	0.4673 (3)	0.74624 (17)	0.0850 (7)
H6	0.1372	0.3984	0.7962	0.102*
C7	-0.0547 (3)	0.4704 (3)	0.67925 (18)	0.0830 (7)
H7	-0.1546	0.4017	0.6845	0.100*
C8	0.1918 (4)	0.8551 (3)	0.49880 (19)	0.1041 (9)
H8A	0.1429	0.9185	0.4449	0.156*
H8B	0.2905	0.7885	0.4820	0.156*
H8C	0.2514	0.9144	0.5531	0.156*
C9	0.5936 (3)	0.6675 (3)	0.80431 (19)	0.1042 (9)
H9A	0.7046	0.6488	0.8557	0.156*
H9B	0.5410	0.7648	0.8118	0.156*
H9C	0.6381	0.6614	0.7435	0.156*

Atomic displacement parameters (\AA^2)

	U^{11}	U^{22}	U^{33}	U^{12}	U^{13}	U^{23}
N1	0.0716 (13)	0.0972 (13)	0.0854 (14)	0.0055 (12)	0.0066 (9)	-0.0007 (11)
O1	0.0858 (11)	0.1004 (12)	0.0995 (12)	-0.0022 (9)	0.0106 (9)	0.0169 (10)
O2	0.0820 (11)	0.1060 (13)	0.0915 (12)	-0.0027 (9)	-0.0012 (9)	0.0038 (9)
C1	0.0778 (16)	0.0904 (16)	0.0803 (15)	0.0037 (13)	0.0101 (13)	0.0021 (12)
C2	0.0693 (14)	0.0799 (14)	0.0732 (14)	0.0017 (12)	0.0099 (12)	-0.0017 (12)
C3	0.0782 (15)	0.0787 (15)	0.0728 (14)	0.0082 (13)	0.0118 (13)	0.0026 (12)

supplementary materials

C4	0.0734 (15)	0.0799 (15)	0.0818 (15)	-0.0017 (12)	0.0132 (13)	-0.0029 (13)
C5	0.0722 (15)	0.0864 (15)	0.0755 (15)	0.0053 (13)	0.0084 (13)	-0.0065 (13)
C6	0.0806 (16)	0.0919 (16)	0.0815 (16)	0.0009 (13)	0.0114 (14)	0.0056 (13)
C7	0.0772 (16)	0.0870 (16)	0.0841 (16)	-0.0032 (12)	0.0126 (13)	-0.0010 (13)
C8	0.1061 (19)	0.0956 (17)	0.113 (2)	-0.0067 (16)	0.0255 (16)	0.0164 (15)
C9	0.0775 (16)	0.115 (2)	0.114 (2)	-0.0073 (15)	0.0006 (15)	-0.0033 (16)

Geometric parameters (Å, °)

N1—C1	1.278 (3)	C4—H4	0.9300
N1—N1 ⁱ	1.414 (4)	C5—C6	1.393 (3)
O1—C3	1.366 (2)	C6—C7	1.372 (3)
O1—C8	1.422 (3)	C6—H6	0.9300
O2—C5	1.371 (3)	C7—H7	0.9300
O2—C9	1.435 (3)	C8—H8A	0.9600
C1—C2	1.446 (3)	C8—H8B	0.9600
C1—H1	0.9300	C8—H8C	0.9600
C2—C7	1.391 (3)	C9—H9A	0.9600
C2—C3	1.402 (3)	C9—H9B	0.9600
C3—C4	1.383 (3)	C9—H9C	0.9600
C4—C5	1.378 (3)		
C1—N1—N1 ⁱ	111.8 (2)	C7—C6—C5	118.7 (2)
C3—O1—C8	119.13 (18)	C7—C6—H6	120.7
C5—O2—C9	116.98 (19)	C5—C6—H6	120.7
N1—C1—C2	122.2 (2)	C6—C7—C2	122.6 (2)
N1—C1—H1	118.9	C6—C7—H7	118.7
C2—C1—H1	118.9	C2—C7—H7	118.7
C7—C2—C3	117.0 (2)	O1—C8—H8A	109.5
C7—C2—C1	122.4 (2)	O1—C8—H8B	109.5
C3—C2—C1	120.5 (2)	H8A—C8—H8B	109.5
O1—C3—C4	122.7 (2)	O1—C8—H8C	109.5
O1—C3—C2	115.7 (2)	H8A—C8—H8C	109.5
C4—C3—C2	121.5 (2)	H8B—C8—H8C	109.5
C5—C4—C3	119.3 (2)	O2—C9—H9A	109.5
C5—C4—H4	120.4	O2—C9—H9B	109.5
C3—C4—H4	120.4	H9A—C9—H9B	109.5
O2—C5—C4	123.9 (2)	O2—C9—H9C	109.5
O2—C5—C6	115.3 (2)	H9A—C9—H9C	109.5
C4—C5—C6	120.8 (2)	H9B—C9—H9C	109.5
N1 ⁱ —N1—C1—C2	-178.8 (2)	C2—C3—C4—C5	1.5 (3)
N1—C1—C2—C7	6.4 (3)	C9—O2—C5—C4	2.6 (3)
N1—C1—C2—C3	-175.1 (2)	C9—O2—C5—C6	-176.66 (18)
C8—O1—C3—C4	15.1 (3)	C3—C4—C5—O2	179.32 (18)
C8—O1—C3—C2	-166.0 (2)	C3—C4—C5—C6	-1.5 (3)
C7—C2—C3—O1	-179.90 (18)	O2—C5—C6—C7	-179.73 (19)
C1—C2—C3—O1	1.5 (3)	C4—C5—C6—C7	1.0 (3)
C7—C2—C3—C4	-1.0 (3)	C5—C6—C7—C2	-0.5 (3)
C1—C2—C3—C4	-179.62 (19)	C3—C2—C7—C6	0.5 (3)

O1—C3—C4—C5

-179.68 (18)

C1—C2—C7—C6

179.1 (2)

Symmetry codes: (i) $-x-1, -y+1, -z+1$.

Fig. 1

